



## Classic Cambridge Homestay

Homestay provides a warm and comfortable home for students during their stay in Cambridge. Students' exposure to the English language, culture and way of life. EC's accommodation staff visit all Homestay providers before they are accepted to host students and then follow up with regular home visits to ensure the comfort and safety of our students.

### What's Included

- English course
- Accommodation on full board
- Supervised activity programme:
  - 5 half day activities and 4 evening activities per week
  - 1 full day excursion for students staying minimum 2 weeks

### Dates available

- 17 June - 25 August

### Ages

- 13 - 17 years

EC's homestay providers can be found in the Cherry Hinton, Arbury, Chesterton & New Chesterton areas of Cambridge.

### Travel time from airport

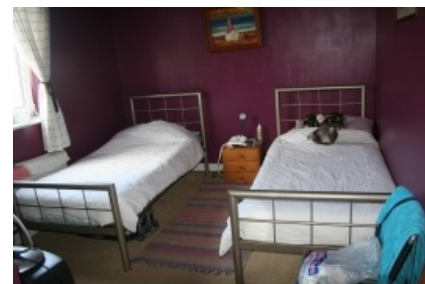
**Heathrow:** approx 1.5 hours **Stansted:** approx 30 mins

**Arrival day** Sunday

**Departure day** Saturday

### Getting to school & activities

- Average journey to school: 30 - 45 minute journey by bus. Please note there are no homestay providers within walking distance of school.
- In order to attend all activities, students must purchase a bus pass.
- A weekly bus pass costs approx £13 p/w and can be purchased from the bus. (This price is subject to change.)



---

## Meals

### Breakfast

Tea/coffee, toast, jam and cereal

### Lunch

Lunch is provided in various outlets in Cambridge city centre, these may include restaurants such as British, Italian, Chinese and American, offering a variety of cuisines. Social Leaders will accompany students to pre-arranged restaurants each day. Packed lunches will be provided by the students' homestay provider at the weekend.

### Dinner

A hot meal, for example pasta/chicken/beef/pork/pizza/hamburgers & water, will be provided at their homestay.

### Dietary Requirements

If students follow a vegetarian diet or have any other dietary requirements EC must be informed upon booking, prior to the students' arrival.

## Medical

At the time of booking EC must be advised of any medical conditions, allergies or medication that needs to be taken by students. EC will endeavour to find a homestay provider that can accept students with medical conditions. However if we are not advised of this in advance, EC cannot take responsibility if the homestay provider refuses to accept the student in their home.

---

## Accommodation

<b>Room Type</b>	Twin room - students are placed in a twin room with other students of the same gender but different nationality
<b>Bathrooms</b>	Shared bathroom
<b>Board status</b>	Full board accommodation - Homestay providers provide students with breakfast and dinner every day. A variety of hot/cold lunches are taken in the city centre on weekdays and homestay providers provide packed lunches on weekends.

### Rooms include

- desk/table where students can do their homework (if not in the room, a place for studying will be provided in a common area)
- storage space
- students will also be provided with access to living areas during acceptable hours

### What to expect from the residence

- All students will have access to a phone and will be allowed to accept incoming calls. If students want to make phone calls they must use a calling card.
- International leaders are accommodated in twin rooms shared with other international leaders. If international leaders book a single room, a supplement will be charged at the time of booking and the room will be reserved based on availability.

If informed at the time of booking, EC can accommodate special requests eg. non-smoking family, no pets, allergies, special dietary requirements etc. However students should bear in mind that this may not always be possible.

EC are happy to assist students with arrangements for any justifiable accommodation change. Requests to change homestay provider accommodation must be accompanied by valid reasons. Additional charges relating to the move must be paid for prior to the move.

### **Linen/towels**

Bed linen is provided; students should bring their own towels - linen and towels will be cleaned once a week.

### **Laundry**

Laundry facilities will be provided by the family once a week.

---

## **Learning centre**

Address: Chesterton Community College, Gilbert Road, Cambridge CB4 3NY, Cambridge, UK

Lessons are held at Chesterton Community College, a school with great facilities and just a 20 minute walk from the city centre.

At EC Cambridge students have a choice of attending either a General English course or an Intensive English course.

- General English - 20 lessons (45 mins each) per week. The course will help improve English language skills by focusing on the key areas: reading, writing, speaking and listening. A strong focus is placed on speech and using the language confidently and fluently.
- Intensive English - 30 lessons (45 mins each) per week. This course follows a similar programme to General English but with 2 extra lessons every afternoon.
- Our dedicated and professional teaching staff provide feedback and support and help students build confidence to speak English.
- International classes
- EC Cambridge will utilise a Double Banking timetable. Put simply, students attend morning sessions of classes one week, the next week they attend afternoon sessions, as illustrated below.

### **First Day**

On the first day, all students sit a placement test - The placement test assesses students in listening, reading, writing and use of English allowing academic staff to place students in the relevant group for their ability.

**Maximum Class Size** 15 students

### **Attendance**

All students must attend school on a daily basis unless they are genuinely indisposed (due to illness, for example). In the case of a student falling ill we ask the homestay provider to take the student to their family doctor. If the student is ill during school hours a member of staff will, if required, accompany them to the hospital (Out-Patients). European students travelling with an European Health Insurance Card (EHIC) are entitled to free public healthcare. All other students are required to pay approximately £60 to see a doctor, which students must pay at the time of their visit.

### **Educational materials**

Course book and educational materials are provided. Students should bring their own notepaper and pens.

---

## Sample programme

	<u>Morning</u>	<u>Afternoon</u>	<u>Evening</u>
<b>Sunday</b>	Arrivals		
<b>Monday</b>	Placement Test & Lessons	Cambridge Orientation Tour	Welcome Party
<b>Tuesday</b>	Lessons	Punting on the River Cam	Sports Evening
<b>Wednesday</b>	Lessons	Scavenger Hunt	Club Night
<b>Thursday</b>	Lessons	Fitzwilliam Museum	Free Evening
<b>Friday</b>	Lessons	Bowling	Fashion Show & Party
<b>Saturday</b>	Full Day Excursion to London		
<b>Sunday</b>	Free Day		
<b>Monday</b>	Traditional English Sports	Lessons	Quiz Night
<b>Tuesday</b>	St John's College Tour	Lessons	Murder Mystery
<b>Wednesday</b>	Swimming	Lessons	Club Night
<b>Thursday</b>	Half Day Trip to Ely	Lessons	Free Evening
<b>Friday</b>	Shopping	Lessons	Talent Show & Disco
<b>Saturday</b>	Departures/Full Day Excursion to London or Great Yarmouth for students staying 3+ weeks		

---

- This is a sample programme only and changes may occur
  - Any lessons / activities missed will not be made up
- 

## Welfare, Rules and Disciplinary Action

### Curfew times

- Students should be back home no later than 10.30 pm

### Alcohol consumption

Any EC student on the Junior Programme caught consuming alcohol during their stay risks being expelled from the school and repatriated to their home country. No alcohol consumption is permitted during the programme regardless of age.

### Drugs

The consumption of any illegal drugs will result in the immediate expulsion and repatriation of the student and the possible intervention of the police.

### Customer Complaints

At EC, we endeavour to provide our students with the highest possible level of service. If, however, a student is unsatisfied with any aspect of their programme with EC, we ask that they inform us immediately. Most problems are small and can be quickly resolved by our staff members. During the first week of school, all students are given an Initial Course Evaluation form, in which they are asked to evaluate various aspects of their stay, such as tuition, accommodation and leisure. The form also allows students the opportunity to bring to our attention anything that is not to their satisfaction should they feel unable to speak to us directly. Solutions to any issues will be provided and all necessary parties will be notified when applicable. Students are also requested to complete an End of Course Evaluation form at the end of their stay such that they have the opportunity to provide EC with general feedback before returning to their home country.

## Accommodation Rules

- Students must keep their room neat and tidy, including making their own bed every morning
- Curfew times must be respected by all students - if students know they are coming home late they should let their homestay provider know
- Students should ask their homestay provider before using their kitchen
- Students are liable for any damages/breakages to the homestay provider's property or possessions
- Students must ask for the family's permission before bringing any guests home
- Students must make sure that they do not lose the house key (if they are given a key), and never lend it to anyone
- Students must ask if they may use the telephone and pay if they do, for any calls they make immediately

## Expulsion

EC reserves the right to expel and repatriate a student at his/her own expense for any of the following reasons:

- Possession of any illegal drugs
- Drinking or bringing alcohol on to any EC premises
- Malicious damage to school property or place of accommodation
- If the student is a danger to his/her own safety or that of other students
- Breaking English law
- Repeated failure to attend academic lessons and/or social activities

In any of the above circumstances the student is informed that their stay is going to be terminated with immediate effect. Simultaneously EC informs the student's agent of the student's behaviour and the course of action to be taken. The earliest flight available is booked at the students expense and an EC staff member accompanies the student to the airport to ensure that the student leaves the country. Following such action EC will terminate all relationships with the student and will be unable to take further responsibility for the student. No refunds will be given to any students who have been expelled.

Valid reasons must accompany a request for a homestay provider change, and each request is considered on its own merits. Such changes are also subject to availability. Students must pay for all costs incurred including transport, additional accommodation charges and cancellation fees (where applicable). The additional charges must be paid in full prior to the move. EC are happy to assist students with arrangements for any justifiable accommodation changes.

## Course Certificate

Students must attend all lessons and organised activities in order to receive their End of Course Certificate.

